

# Frequently Asked Questions:

## **Q. Can I use the NAPA logo?**

- A. As a fundraiser, you can you use the NAPA logo to help you promote your fundraiser.  
Contact: [fundraising@napa-activities.co.uk](mailto:fundraising@napa-activities.co.uk) to find out more

## **Q. How do I get poster templates fliers etc?**

- A. Examples of these are provided in the fundraising pack

## **Q. How do I send in the money that I raise?**

- A. If you have used a giving page or Text to Donate then you don't need to do anything. If you are sending a cheque to NAPA – Please make it payable to NAPA and send to St Marys Court, The Broadway, Amersham, Bucks, HP7 0UT. Make sure you include your name and address so we know it is from you. For bank transfers please contact: [fundraising@napa-activities.co.uk](mailto:fundraising@napa-activities.co.uk)

## **Q. How can I claim gift aid on the money that I raise?**

- A. If your sponsors are UK taxpayers then NAPA can claim an extra 25p for every £1 you raise. Just tick the Gift Aid box!

If you have any questions that are not covered please contact: [fundraising@napa-activities.co.uk](mailto:fundraising@napa-activities.co.uk)

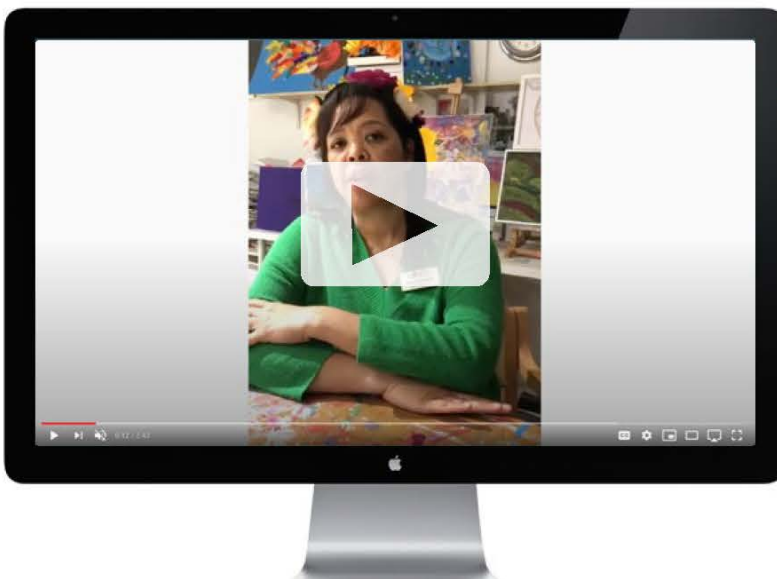


*"Just to say thank you for the Spottea event this morning. [We] really enjoyed sharing tea, cake and chat with mum and you and it's the first time in a very long time I have put a posh frock on which made a lovely change...."*

From a Relative of a Resident at **Wiltshire Heights Care Home** (Bradford-on-Avon)

*It was so lovely to watch the concert, knowing my partner , Steve was watching at the same time, even though we can't be together.*

From Ted, a resident at Oak Tree Lodge, Yorkshire



## **"Proud to be NAPA members"**

*Click here* to hear the thoughts from Shona Bradbury, Home Manager, Appleby House Care Home in Epsom, Surrey